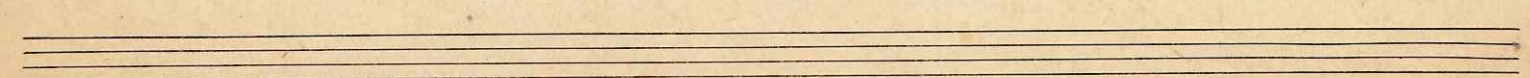
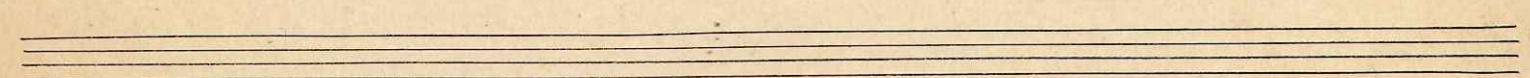
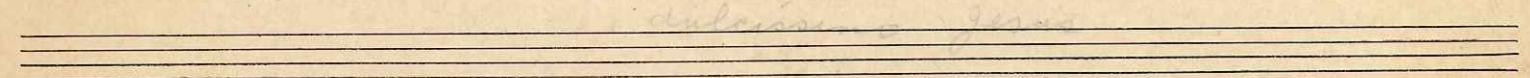
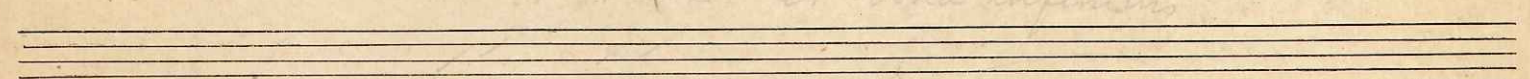
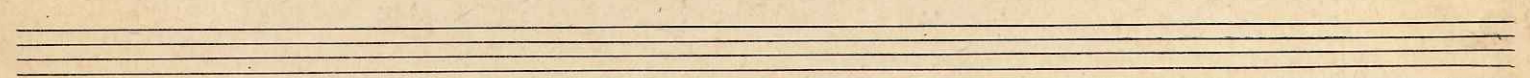
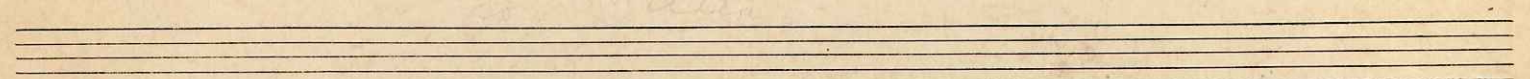
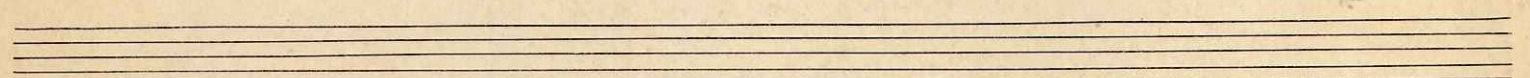
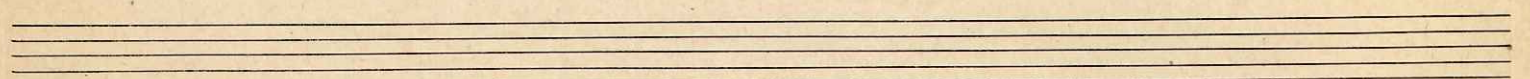
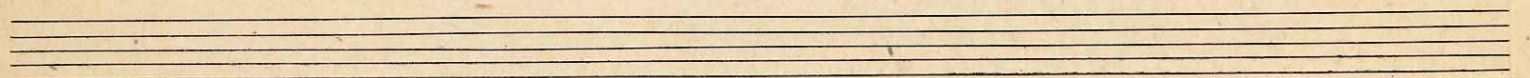
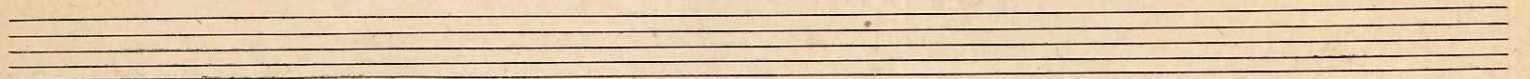
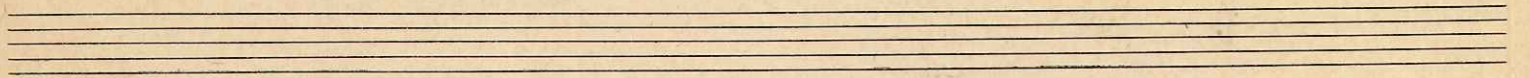
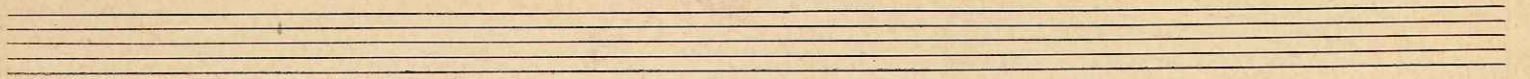


イザヤ
以 魯 亞 書 的

1779/1800 1800/1810

中 須 石 和

Sop. + Org.



Moderato

mf

Handwritten musical score for the first system, featuring a treble and bass staff with various notes, rests, and dynamic markings. The tempo is marked "Moderato".

Handwritten musical score for the second system, featuring a treble and bass staff with various notes, rests, and dynamic markings. The tempo is marked "Moderato".

Handwritten musical score for the third system, featuring a treble and bass staff with various notes, rests, and dynamic markings. The tempo is marked "Moderato".

Handwritten musical score system 1. It consists of three staves. The top staff has a treble clef and contains several measures of music with notes and rests. The middle staff has a bass clef and contains notes and rests. The bottom staff has a bass clef and contains notes and rests. There are dynamic markings: *gt.* (grandioso) above the first measure of the top staff, *mf cresc.* (mezzo-forte crescendo) below the second measure of the middle staff, and *dim.* (diminuendo) below the eighth measure of the middle staff.

Handwritten musical score system 2. It consists of three staves. The top staff has a treble clef and contains notes and rests. The middle staff has a bass clef and contains notes and rests. The bottom staff has a bass clef and contains notes and rests. There are dynamic markings: *mp.* (mezzo-piano) above the first measure of the top staff, *mp.* (mezzo-piano) below the fifth measure of the middle staff, and *mp.* (mezzo-piano) below the eighth measure of the middle staff. The word *Animato* is written in the right margin.

Handwritten musical score system 3. It consists of three staves. The top staff has a treble clef and contains notes and rests. The middle staff has a bass clef and contains notes and rests. The bottom staff has a bass clef and contains notes and rests. There are dynamic markings: *cresc.* (crescendo) below the fifth measure of the middle staff, and *mp.* (mezzo-piano) below the eighth measure of the middle staff.

Handwritten musical score for "The Rose Tree" in G major, 3/4 time. The score is written on three systems of five-line staves. The first system includes a treble staff with a melody, a bass staff with a bass line, and a piano staff with chords. The second system continues the melody and bass line, with the piano staff showing a change in chord structure. The third system concludes the piece with a final chord in the piano staff. The score is written in ink on aged paper.

A handwritten musical score for the song "The Rose Tree". The score is written on four staves. The first staff is the vocal melody, starting with a treble clef and a key signature of one flat (B-flat). The second staff is the piano accompaniment, starting with a treble clef and a key signature of one flat. The third staff is the piano accompaniment, starting with a bass clef and a key signature of one flat. The fourth staff is the piano accompaniment, starting with a bass clef and a key signature of one flat. The music is written in a simple, handwritten style. The lyrics "The Rose Tree" are written below the first staff. The tempo marking "mp" (mezzo-piano) is written above the first staff. The score is divided into measures by vertical bar lines. The first staff has 16 measures, the second staff has 16 measures, the third staff has 16 measures, and the fourth staff has 16 measures. The music is written in a simple, handwritten style.

Handwritten musical score for "The Rose Tree" (Der Rosenkranz) on five staves. The notation includes various musical symbols such as notes, rests, and accidentals, along with handwritten lyrics in German. The score is written on aged, yellowed paper.

Handwritten musical score system 1. It includes a vocal line with lyrics in Japanese and a piano accompaniment. The lyrics are: "いそいそと、つぎは、そのひかりをかがやかせよう。" (isoiso to, tsugi wa, sono hikari o kagayakaseyou). The piano part features chords and a melodic line in the right hand, and a bass line in the left hand. Dynamics like *mp* and *cresc.* are indicated.

Handwritten musical score system 2. It includes a vocal line with lyrics in Japanese and a piano accompaniment. The lyrics are: "ふたりの心は、いつまでも、" (futari no kokoro wa, itsu made mo,). The piano part continues with chords and a melodic line.

Handwritten musical score system 3. It includes a vocal line with lyrics in Japanese and a piano accompaniment. The lyrics are: "ふたりの心は、いつまでも、" (futari no kokoro wa, itsu made mo,). The piano part continues with chords and a melodic line.

Handwritten musical score system 4. It includes a vocal line with lyrics in Japanese and a piano accompaniment. The lyrics are: "ふたりの心は、いつまでも、" (futari no kokoro wa, itsu made mo,). The piano part continues with chords and a melodic line.

Handwritten musical score on three staves. The notation includes various notes, rests, and accidentals. A *dim.* (diminuendo) marking is present above the middle staff.

Moderato

Handwritten lyrics in Japanese characters and Roman letters, corresponding to the vocal line.

Handwritten musical score on three staves. The notation includes various notes, rests, and accidentals. A *p* (piano) marking is present above the middle staff, and a *pp* (pianissimo) marking is present above the bottom staff.

Handwritten musical score on three staves. The notation includes various notes, rests, and accidentals. A *cresc.* (crescendo) marking is present above the middle staff. The bottom staff includes a *f* (forte) marking at the end.

Handwritten musical score for the song "The Rose Tree". The score is written on four staves. The first staff is for the vocal melody, starting with a treble clef and a key signature of one flat (B-flat). The tempo is marked "mf" (mezzo-forte). The lyrics "The Rose Tree" are written below the first staff. The second staff is for the piano accompaniment, starting with a treble clef and a key signature of one flat. The tempo is marked "mf". The third staff is for the piano accompaniment, starting with a bass clef and a key signature of one flat. The tempo is marked "mf". The fourth staff is for the piano accompaniment, starting with a bass clef and a key signature of one flat. The tempo is marked "mf". The score is written in a cursive, handwritten style.

[illegible]

Handwritten musical score for the song "The Rose Tree". The score is written on five staves. The first staff is a treble clef with a key signature of one sharp (F#) and a common time signature (C). The second staff is a treble clef with a key signature of one sharp (F#) and a common time signature (C). The third staff is a bass clef with a key signature of one sharp (F#) and a common time signature (C). The fourth staff is a bass clef with a key signature of one sharp (F#) and a common time signature (C). The fifth staff is a bass clef with a key signature of one sharp (F#) and a common time signature (C). The music is written in a simple, folk-like style. The lyrics "The Rose Tree" are written below the staves. The score includes various musical notations such as notes, rests, and accidentals. The handwriting is in ink on aged paper.

un Poco Più Messo

subit. f

Handwritten musical score system 1. It consists of three staves. The top staff is a vocal line with lyrics "F u n a r i e". The middle staff is a piano accompaniment with chords and some melodic lines. The bottom staff is a bass line. Dynamics include *subit. f* and *mp*.

Handwritten musical score system 2. It consists of three staves. The top staff is a vocal line with lyrics "F u n a r i e". The middle staff is a piano accompaniment. The bottom staff is a bass line. Dynamics include *mp* and *mult. dim.*.

Handwritten musical score system 3. It consists of three staves. The top staff is a vocal line with lyrics "F u n a r i e". The middle staff is a piano accompaniment. The bottom staff is a bass line. Dynamics include *mp* and *p*.

Maestoso

Handwritten musical score for the first system. It consists of four staves. The top staff has a treble clef and a key signature of one sharp (F#). It contains a melody with a fermata over the first measure. The second staff has a bass clef and contains a wavy line. The third staff has a treble clef and contains a melody with a fermata over the first measure. The fourth staff has a bass clef and contains a melody with a fermata over the first measure. Dynamics include 'pp' and 'f'.

dim. *mp*

Handwritten musical score for the second system. It consists of four staves. The top staff has a treble clef and a key signature of one sharp (F#). It contains a melody with a fermata over the first measure. The second staff has a bass clef and contains a wavy line. The third staff has a treble clef and contains a melody with a fermata over the first measure. The fourth staff has a bass clef and contains a melody with a fermata over the first measure. Dynamics include 'dim.' and 'mp'.

mf

Handwritten musical score for the third system. It consists of four staves. The top staff has a treble clef and a key signature of one sharp (F#). It contains a melody with a fermata over the first measure. The second staff has a bass clef and contains a wavy line. The third staff has a treble clef and contains a melody with a fermata over the first measure. The fourth staff has a bass clef and contains a melody with a fermata over the first measure. Dynamics include 'mf'.

Handwritten musical score for the first system. It consists of a vocal line on a single staff and a piano accompaniment on a grand staff (treble and bass staves). The vocal line begins with a treble clef and contains several measures of music with notes and rests. Below the notes are some handwritten characters, possibly a phonetic transcription. The piano accompaniment starts with a grand staff and includes chords and melodic lines. A dynamic marking 'p' (piano) is visible in the vocal line. There are some handwritten annotations above the first measure of the vocal line, including a cross-like symbol.

Handwritten musical score for the second system. It continues the vocal and piano parts from the first system. The vocal line starts with the marking 'poco cresc.' (poco crescendo) and 'mp' (mezzo-piano). The piano accompaniment continues with similar textures. A dynamic marking 'p' is also present in the piano part. The system concludes with several measures of sustained chords in the piano part.

Four empty musical staves, each consisting of five horizontal lines, arranged vertically at the bottom of the page. They are intended for additional musical notation.

以賓亞書

わたくし他の極まり歌をこけり、いひ人衆光けをたれしものには歸すと
 視ふ、主の日かり哥うたこしを念おも志とけりとけしきねとをもとまり罪人と施す救ふ人
 日ひの光ひかりをくみ人日ひの光ひかりをかくやかきむるべし。天の方衆をさえうせ、もろく
 の天あめの書きをたの如くすべし。

起るに
いかりを背て、そとの方の光をかり、主の栄光
照るいと小なり。

主に賢い人ばかり者うを歌ひつゝ
 歸りおをり、その首^{かぶ}もと二レ一の
 不^ふ敵^{てき}を^をちと
 いちばを^をと^とし^しみ^みと^とく^くに^にを^をえ^えん