

Prelude I, II & Marche Funebre
from the Ballet "Shadow and Light"

Based on the Ancient Chronicles of Japan

由美
(Yuhmei)

Kazu Nakaseko

Prelude I, II & Marche Funebre
from Ballet "Shadow and Light"

Kazu Nakaseko

Prelude I
Moderato

12/4 4/4

Violin I (V I) 5/4

Violin II (V II) 5/4

Viola (VI) 5/4

Cello (C) 5/4

Double Bass (Cb) 5/4

Flute (Fl) 5/4

Clarinet in B-flat (Cl in Bb) 5/4

Bassoon (F) 5/4

Contrabassoon (Cb) 5/4

Timpani (Timp) in F, B, C. P

divisi P

P>compre PPP

divisi P

P>compre PPP

No. 1

Fl. 10 *mp* *a1*

Timp. 10

VII 10

vla

Fl. 20 *mp* *a1*

Timp. 20

VII 20

vla

Fl. 30 *mp* *2.* *5*

Timp. 30

VII 30 *mp*

vla *mp*

vcl *divisi* *mp*

Fl.

Ob.

Cl in Bb

Timp.

VII

VII

vla

vcl

Fl. *mf*

Ob. *mf*

Cl in Bb *a2* *mf*

divisi

VII *mf*

mf

mf

VII *mf*

vcl *mf*

Fl. -

Ob. *mf* ³ ⁵ *p* *mp*

Cl. in Bb *mp*

Timp.

VII

VII

Vla

Vlc

Fl. *mf*

Ob. *mf*

Cl. in Bb *mf*

Timp.

divisi VII

Viol. No. II

Vla

Vlc

50

Fl. *f* *p*

Ob. *f* *p*

Cl. in Bb *f* *p*

Timp. *f* *ff*

vi I *f* *arco mp* *Tutti* *mp*

vi II *f* *arco mp* *Tutti* *mp*

vla *f* *arco mp* *Tutti* *mp*

vlc *f* *arco mp* *Tutti* *mp*

cb. *mp*

Tr. in Bb

1. 2.

Tub. *mp.*

vi I

vi II

vla

vlc

cb.

Con sordino

Tr in Bb

mp

1. 2.

mp.

p

vI

vII

vIa

vIc

cb

Tr. ⁶⁰

Trb. 1. 2.

VI I ⁶⁰

VI II

vla

vlc

cb

Tr. *a2 senza sordino*

Trb. *a3*

VI I ⁷⁰

VI II

vla

vlc

cb

Tr.

Trb.

VI I

VI II

vla

vlc

cb

Tr. ⁸⁰

Trb.

Timp. ⁸⁰

VI I

VI II

vla

vlc

cb

No. 1

Handwritten musical score for the first system, featuring Tr. (Trumpet), Tbn. (Tuba), VI I (Violin I), VI II (Violin II), Vla (Viola), Vlc (Violoncello), and Cb (Contrabasso). The score includes dynamic markings such as *mf* and *mfz*, and articulation like *a3*. The notation is in a key with one flat and a 4/4 time signature.

Handwritten musical score for the second system, featuring Tr. (Trumpet), Tbn. (Tuba), Timp. (Timpani), VI I (Violin I), VI II (Violin II), No. 1 (likely Viola), and Cb (Contrabasso). The score includes dynamic markings such as *mf*, *ff*, and *mp*, and articulation like *a3* and *2.3.*. The notation continues in the same key and time signature.

Handwritten musical score for Piccolo, Flute, Oboe, Clarinet, Trombone, and Timpani. The score includes dynamic markings such as *f*, *pp*, *mp*, and *fz*, and performance instructions like *1.* and *90*. The notation features complex rhythmic patterns and melodic lines.

Pic. *f* *pp* *mp* *fz* *90*

Fl. *f* *pp* *mp* *fz* *90*

Ob. *f* *pp* *mp* *fz* *90*

Cl. *f* *pp* *mp* *fz* *90*

Trb. *f* *pp* *mp* *fz* *90*

Timp. *f* *pp* *mp* *fz* *90*

vi I *f* *pp* *mp* *fz* *90*

vi II *f* *pp* *mp* *fz* *90*

vla *f* *pp* *mp* *fz* *90*

vlc *f* *pp* *mp* *fz* *90*

cb *f* *pp* *mp* *fz* *90*

Partial view of the musical score on the adjacent page, showing staves for Piccolo, Flute, Oboe, Clarinet, and Trombone.

Pic.

Fl.

Ob.

Cl.

Trb.

100

Pic.

Fl.

Ob.

Cl. in Bb

Trb

Handwritten piano accompaniment for the first system, including treble and bass clef staves with various chords and melodic fragments.

Fl. *p* *pp* *p* *1. 2.*

ob *p* *pp* *p* *1. 2.*

cl *pp* *p* *p* *p* *1. 2.*

Fg *a2*

Tr. *mf*

Trb. *mf* *mf 2, 3.*

Timp. *f*

vI *mf*

vII *mf*

vla *f*

vlc *f*

cb *f*

Handwritten musical notation for the first system, measures 110-113. It features four staves with various notes, rests, and dynamic markings such as *f* and *p*. A box containing the number 110 is present above the first staff.

Handwritten musical notation for the second system, measures 114-117. It includes four staves with complex rhythmic patterns and dynamic markings like *f* and *p*. A box containing the number 110 is located above the first staff.

Handwritten musical notation for the third system, measures 118-121. It consists of four staves with notes and rests, including a dynamic marking of *p*. A box containing the number 110 is positioned above the first staff.

Handwritten musical notation for the fourth system, measures 122-125. It features four staves with notes, rests, and dynamic markings such as *f*, *pp*, and *p*. A box containing the number 110 is above the first staff. The notation includes some complex rhythmic figures and dynamic changes.

MS No. C 1

Pizz. p

Prelude II

Handwritten musical score for Prelude II, measures 120-124. The score is arranged in systems for various instruments:

- Flute (Fl.):** Measures 120-124. Starts with a first ending bracket and a first ending mark (1.). The notation includes a melodic line with slurs and accents. Dynamic marking: *P leggiero*.
- Oboe (ob.):** Measures 120-124. Rests.
- Clarinet (cl.):** Measures 120-124. Starts with a first ending bracket and a first ending mark (1.). The notation includes a melodic line with slurs and accents. Dynamic marking: *P leggiero*.
- Bassoon (Fg.):** Measures 120-124. Rests.
- Trumpet (Tr.):** Measures 120-124. Rests.
- Tuba (Tnb.):** Measures 120-124. Rhythmic pattern: *d. d. d.*
- Violin I (vI):** Measures 120-124. Rhythmic pattern: *d. d. d.*
- Violin II (vII):** Measures 120-124. Rhythmic pattern: *d. d. d.*
- Viola (vIa):** Measures 120-124. Rhythmic pattern: *d. d. d.*
- Cello (Cb):** Measures 120-124. Rhythmic pattern: *d. d. d.*
- Double Bass (Cb):** Measures 120-124. Rhythmic pattern: *d. d. d.*

Tempo markings **120** are present above measures 120, 122, 123, and 124.

Partial view of the adjacent page of the musical score, showing the right-hand staves for various instruments:

- Flute (Fl.)
- Clarinet (cl.)
- Violin I (vI)
- Violin II (vII)
- Viola (vIa)
- Cello (Cb)
- Double Bass (Cb)

Fl. *mp*

Cl.

Vlc.

Fl. *mf*

Ob.

Cl. *mf*

Fg. *mf*

Vl. I *mf* *Pizz. p*

Vl. II *mf* *Pizz. p*

Vla. *mf* *mp*

C. *mf* *Pizz. p*

Cb. *Pizz. mf*

140

d

Solo
mp

Fl.
ob.
cl.
Fg.

vI
vII
vIa
vIc

141

Fl.
ob.
cl.
Fg.

vI
vII
vIa
vIc

arco

Pic.
Fl.
ob.
cl.
vI
vII
vIa
vIc

Pic.
Fl.
No. 1
vIa

Più mosso

1. 150

Pic. mp sempre staccato

Fl. mp sempre staccato

ob.

cl.

VII mp. leggero

VII

Vla

Vlc

160

Pic. mf

Fl. mf

VII mf

Vla

tutti

170

Pic. *f* *#f* *b+bf* *f* *#f* *b+bf* *f* *#f* *b+bf* *f* *#f* *b+bf*

Fl. *b+bf* *b+bf* *b+bf* *b+bf* *b+bf* *b+bf* *b+bf* *b+bf* *b+bf* *b+bf* *b+bf* *b+bf*

v.I. *f* *#f* *#f* *#f* *f* *#f* *f* *#f* *b+bf* *b+bf* *b+bf* *b+bf*

v.II. *f* *#f* *f* *#f* *f* *#f* *f* *#f* *b+bf* *f* *f* *f*

170

Pic. *f* *#f* *b+bf* *f* *#f* *b+bf* *f* *#f* *b+bf* *f* *#f* *b+bf* *f* *#f* *b+bf* *f* *#f* *b+bf*

Fl. *b+bf* *b+bf* *b+bf* *b+bf* *b+bf* *b+bf* *b+bf* *b+bf* *b+bf* *b+bf* *b+bf* *b+bf* *b+bf* *b+bf* *b+bf* *b+bf* *b+bf* *b+bf*

ob. *f* *#f* *b+bf* *f* *#f* *b+bf* *f* *#f* *b+bf* *f* *#f* *b+bf* *f* *#f* *b+bf* *f* *#f* *b+bf*

cl. *f* *#f* *b+bf* *f* *#f* *b+bf* *f* *#f* *b+bf* *f* *#f* *b+bf* *f* *#f* *b+bf* *f* *#f* *b+bf*

Fg. *f* *#f* *b+bf* *f* *#f* *b+bf* *f* *#f* *b+bf* *f* *#f* *b+bf* *f* *#f* *b+bf* *f* *#f* *b+bf*

v.I. *f* *#f* *b+bf* *f* *#f* *b+bf* *f* *#f* *b+bf* *f* *#f* *b+bf* *f* *#f* *b+bf* *f* *#f* *b+bf*

v.II. *f* *#f* *b+bf* *f* *#f* *b+bf* *f* *#f* *b+bf* *f* *#f* *b+bf* *f* *#f* *b+bf* *f* *#f* *b+bf*

Solo

Pic.

Fl.

ob.

cl.

Fg.

v.I.

v.II.

ob.

cl.

No. C 1

cb.

180

Pic. Fl. ob. cl. Fg

mf *dim.* *p* *mp* *sempre staccato*

a2 *a2* *a2*

180

vla. cb

pizz. *mp*

200

ob. cl. No. C 1 cb

mp *mf*

200

Handwritten musical score for the first system, measures 208-210. The staves are labeled ob., cl., Fg, and cb. The music includes various notes, rests, and dynamic markings such as *mf* and *bd.*. A box containing the number 210 is present above the ob. staff in the final measure.

Handwritten musical score for the second system, measures 211-215. The staves are labeled Fl., ob., cl., Fg, and cb. The music includes various notes, rests, and dynamic markings such as *mf*, *bf*, and *a2*. A box containing the number 210 is present above the cb. staff in the final measure.

Partial view of handwritten musical score on the right page, showing staves for Fl., ob., cl., Fg, and cb.

Partial view of handwritten musical score on the right page, showing staves for Fl., ob., cl., Fg, and cb. A circular stamp with the text "No. C 1" is visible on the right side.

Handwritten musical score for woodwinds. The top system includes parts for Flute (Fl.), Oboe (Ob.), Clarinet (Cl.), and Bassoon (Fg.). The Flute part features a melodic line with a dynamic marking of *pp* and a hairpin crescendo leading to a fortissimo (*f*) section. The Oboe part has a dynamic marking of *mf*. The Clarinet and Bassoon parts provide harmonic support with sustained notes and some melodic fragments. A second system below shows the Bassoon (Cb.) part with a dynamic marking of *pp*. The score includes various musical notations such as slurs, ties, and dynamic markings.

Handwritten musical score for woodwinds, continuing from the previous page. The top system includes parts for Flute (Fl.), Oboe (Ob.), Clarinet (Cl.), Bassoon (Fg.), and Bassoon (Cb.). The Flute part is mostly blank, with a diagonal line drawn across the staff. The Oboe part has a few notes. The Clarinet part has a few notes. The Bassoon part has a few notes. The Bassoon (Cb.) part has a few notes. The score includes various musical notations such as slurs, ties, and dynamic markings. A diagonal line is drawn across the entire system, and the text "V. 5." is written in the center.

No. C 1

Handwritten musical score for measures 229 and 230. The score is arranged in systems for various instruments:

- Flute (Fl.):** Measures 229-230 are mostly rests.
- Oboe (ob.):** Measures 229-230 are mostly rests.
- Clarinet (cl.):** Measures 229-230 are mostly rests.
- Bassoon (Fg.):** Measures 229-230: mf , $a2$, f .
- Trombone (Tr.):** Measures 229-230: mf .
- Trumpets (I, II, III):** Measures 229-230: mf .
- Timpani (Timp.):** Measures 229-230 are mostly rests.
- Violins (vi. I, II):** Measures 229-230: mf .
- Viola (vla.):** Measures 229-230: mf .
- Violoncello (vcl):** Measures 229-230: mf .
- Contrabass (cb):** Measures 229-230: f .

The notation includes various musical symbols such as notes, rests, dynamics, and articulation marks.

McMurry No. C 1

Handwritten musical notation on a single staff. The notes are: G4, A4, B4, C5, B4, A4, G4, F4, E4, D4, C4. There are rests in the first and last measures. The piece concludes with a double bar line.

Handwritten musical notation on two staves. The upper staff contains a melodic line with slurs and dynamic markings like *p* and *f*. The lower staff contains a bass line with notes and rests. The piece ends with a double bar line.

Handwritten musical notation on a single staff, starting with a dynamic marking of *mf*. The notes are: G4, A4, B4, C5, B4, A4, G4, F4, E4, D4, C4. There are rests in the first and last measures. The piece concludes with a double bar line.

Handwritten musical notation on five staves. This section is highly complex, featuring many notes, accidentals, and slurs across multiple measures. It includes dynamic markings like *f*. The piece concludes with a double bar line.

MS No. C 1

$\text{♩} = \text{♩}$ *Meno mosso*

240

ob. $\frac{3}{4}$ $\frac{2}{4}$

cl. $\frac{3}{4}$ $\frac{2}{4}$

Fg. $\frac{3}{4}$ $\frac{2}{4}$

$\text{♩} = \text{♩}$
Meno mosso

240

Tr. $\frac{3}{4}$ $\frac{2}{4}$

I $\frac{3}{4}$ $\frac{2}{4}$

II $\frac{3}{4}$ $\frac{2}{4}$

III $\frac{3}{4}$ $\frac{2}{4}$

$\text{♩} = \text{♩}$
Meno mosso

240

Timp. $\frac{3}{4}$ $\frac{2}{4}$

$\text{♩} = \text{♩}$
Meno mosso

240

VI I $\frac{3}{4}$ $\frac{2}{4}$

VI II $\frac{3}{4}$ $\frac{2}{4}$

vla $\frac{3}{4}$ $\frac{2}{4}$

vlc $\frac{3}{4}$ $\frac{2}{4}$

cb $\frac{3}{4}$ $\frac{2}{4}$

arco *f*

ff *ff* *ff* *ff* *ff*

divisi *p* *divisi* *p*

ob.

cl.

Fg.

VI I

vla

vlc

ob.

cl.

Fg.

Timp.

VI I

No. 51

vlc

250

ob. *p*

cl. *p*

Fg. *pp*

250

vI. *pp*

vII. *pp*

vla. *pp*

divisi

Animato

ob. *p*

cl. *p*

Fg. *p*

Animato

Timp. *ppp*, *p*, *mf*, *mp*

vI. *mf*

vII. *mf*

vla. *mf*, *cresc.*

mf cresc.

Five sets of empty musical staves, each consisting of a five-line staff, arranged vertically. These staves are intended for woodwind and string parts.

266

Musical score for four woodwind instruments: Flute (Fl.), Oboe (ob.), Clarinet (cl.), and Bassoon (Fg.). The score is written in treble clef for Flute and Oboe, and bass clef for Clarinet and Bassoon. It consists of four measures. The first three measures show melodic lines for each instrument, with dynamic markings such as *f* and *mp*. The fourth measure features a complex rhythmic pattern with accents and slurs.

268

Musical score for Timpani (Timp.). It consists of four measures, showing a simple rhythmic pattern with dynamic markings *mf* and *f*.

260

Musical score for four string instruments: Violin I (vI), Violin II (vII), Viola (vIa), Violoncello (vIc), and Contrabass (cb). The Violin parts are in treble clef, while the Viola, Violoncello, and Contrabass parts are in bass clef. The score is written in a complex, rhythmic style with many slurs and dynamic markings including *f*, *mf*, and *fz*.

Handwritten musical score for the first system, measures 270-274. The score consists of five staves. The first two staves are treble clefs with a key signature of one flat (B-flat). The third staff is a vocal line with lyrics "Sdo" and a melodic line. The fourth and fifth staves are bass clefs. The music includes dynamic markings such as *mp*, *mf*, *p*, and *f*, and articulation marks like accents and slurs. A box containing the number "270" is present above the first staff.

Handwritten musical score for the second system, measures 270-274. The score consists of six staves. The first two staves are treble clefs. The third staff is an alto clef (C-clef on the third line). The fourth and fifth staves are bass clefs. The music includes dynamic markings such as *p*, *mp*, *mf*, and *f*, and articulation marks like accents and slurs. A box containing the number "270" is present above the first staff.

© No. C 1

Handwritten musical score for woodwinds and strings. The score is organized into two systems of staves. The first system includes parts for Flute (Fl.), Oboe (ob.), Clarinet (cl.), and Bassoon (Fg.). The second system includes parts for Violin I (vI), Violin II (vII), Viola (vIIa), Violoncello (vIc), and Contrabass (cb). The notation is in a common time signature and features various musical notations such as notes, rests, slurs, and dynamic markings like *f*, *p*, and *mf*. The woodwind parts show complex rhythmic patterns and melodic lines, while the string parts provide a harmonic and rhythmic foundation.

© No. C 1

Handwritten musical score for the first system, measures 270-275. The system consists of five staves. The top staff has dynamic markings *p*, *#p*, *p*, *p*, and *mp*. The second staff has a *mp* marking at the beginning and a *p* marking. The third staff has a *mp* marking. The fourth staff has a *mp* marking. The fifth staff has a *mp* marking. A *solo* marking is present above the second staff in the fifth measure. A box containing the number 270 is above the first measure of the top staff.

Handwritten musical score for the second system, measures 276-280. The system consists of five staves. The top staff has a *f* marking and a *molto div.* marking. The second staff has a *f* marking. The third staff has a *f* marking and a *Pizz.* marking. The fourth staff has a *f* marking. The fifth staff has a *f* marking. A box containing the number 280 is above the first measure of the top staff. A *Pizz.* marking is also present below the fifth staff in the third measure.

MS No. C 1

A series of ten empty musical staves, each consisting of five lines, arranged vertically. These staves are intended for the Flute, Oboe, Clarinet, Bassoon, Violin I, Violin II, Viola, Violoncello, and Contrabass parts.

Fl. 270

ob. 270

cl.

Fg. 270

Musical notation for the woodwind section. The Flute (Fl.) and Clarinet (cl.) parts are mostly rests. The Oboe (ob.) part features a melodic line with triplets and slurs. The Bassoon (Fg.) part consists of a sequence of notes with dynamic markings: *bd*, *bd*, *hd*, *#d*, *p*, *p*, *#p*, *p*.

vln I 270

vln II

vla

vcl 270

cb

Musical notation for the string section. Violin I (vln I) has a series of chords with a *p* dynamic marking. Violin II (vln II) is a rest. Viola (vln) has a rhythmic pattern of eighth notes. Violoncello (vcl) has a melodic line with dynamic markings: *mp*, *f*, *f*, *f*, *f*, *f*, *f*, *f*, *f*, *f*. Contrabass (cb) is a rest.

Handwritten musical score for the first system. It features a treble clef on the left. The melody consists of several measures, with a first ending (marked '1.') and a second ending (marked '2.'). The bass line contains notes and rests, including a double bar line. Dynamics include *mf*.

Handwritten musical score for the second system. It features a treble clef on the left. The melody includes trills and slurs. The bass line contains notes and rests. Dynamics include *mf* and *arco*.

MS No. C 1

Fl. *mf* 300 *mf*

ob. *mf*

cl. *mf*

Fg. *mf*

Trb. *mf* 300

Vl I 300

Vl II

Vla

Vlc

cb

Pizz. mf

Fl.

ob.

cl.

Fg.

Tr.

Trb.

Vl I

Vl II

Vla

Vlc

cb

NO. 5
NO. 1 C I

Fl. *p* *mf* *pp* *pp* *a2* *bp* *p* *pp*

ob. *pp* *p* *p* *bd* *bd* *p* *bp* *p* *d.* *a2* *pp* *pp*

cl. *p* *p.* *p.* *p.* *p.* *p.* *p.* *p.* *p.*

Fg *d* *d* *bd* *bd* *d* *d* *d*

Tr. *a2* *mf*

Trb. *a3* *mf 2. 3.* *bd* *p* *p* *p* *p*

Vl. I *a2* *mf*

Vl. II *a2* *mf*

Vc I *a2* *mf*

cb *a2* *mf*

MS
No. C 1

Allargando

Pic. *p* *p* *p* *f* *mf* *p*

Fl. *p* *p* *p* *f* *ff* *p*

Ob. *p* *p* *p* *f* *ff* *p*

Cl. *p* *p* *p* *f* *ff* *p*

Fg *d* *bd* *d* *ff* *d* *d*

Allargando

Tr. *mf* *mf* *mf* *ff* *ff*

Tub *mf* *mf* *mf* *ff* *ff*

Allargando

Timp. *mf* *mf* *ff* *ff*

Allargando

vI *f* *f* *f* *ff* *ff*

vII *f* *f* *f* *ff* *ff*

vla *f* *f* *f* *ff* *ff*

vlc *f* *f* *f* *ff* *ff*

cb *f* *f* *f* *ff* *ff*

arco

320

320

Con sordino
2 2

solo

pp

320

320

(Solo) p

pp

NO. C 1

Handwritten musical score for page 34, featuring the following instruments and parts:

- Pic.** (Piccolo): Resting throughout the page.
- Fl.** (Flute): Resting throughout the page.
- ob.** (Oboe): Resting throughout the page.
- cl.** (Clarinet): Resting throughout the page.
- Fg.** (Fagotto): Resting throughout the page.
- Tr.** (Trumpet): *pp* (pianissimo) melodic line in the first measure.
- Tub.** (Tuba): *pp* (pianissimo) rhythmic pattern: *d. - b d b d - d. - d - d.*
- Timp.** (Timpani): *pp* (pianissimo) melodic line in the first measure.
- vII** (Violin II): Resting throughout the page.
- vIII** (Violin III): Resting throughout the page.
- vIa** (Viola): Resting throughout the page.
- vIc** (Violoncello): *ppp* (pianississimo) sustained chords throughout the page.
- cb** (Contrabasso): Resting throughout the page.

Attacca

Handwritten musical score for page 35, featuring the following instruments and parts:

- Marc.** (Maracas): *An* (Anno).
- 2 ob.** (2 Oboes): *3/4* time signature.
- 2 Fg.** (2 Fagotti): *3/4* time signature.
- Timp. in F, B^b, C** (Timpani): *3/4* time signature, *p* (piano).
- ob.** (Oboe): *b^b* (B-flat).
- Fg.** (Fagotto): *b^b* (B-flat).
- Timp.** (Timpani): *1* (First).
- vII** (Violin II): *b^b* (B-flat).
- Fg.** (Fagotto): *p* (piano).
- Timp.** (Timpani): *1* (First).
- vII** (Violin II): *b^b* (B-flat).
- No. 1** (Violoncello No. 1): *b^b* (B-flat).
- vIc** (Violoncello): *b^b* (B-flat).

Marche Funebre Andante

2 Ob. *a1* 10

2 Fg. *a1* 10

Timp. in F, Bb, C *ti* 10

Ob. 20

Fg. 20

Timp. 20

Ob. 30

Fg. 30

Timp. 30

VI II No. 1

Vlc

Handwritten musical score for Violins I and II, Viola, and Violoncello. The score consists of three staves. The Violins I staff (vIa) is in treble clef with a key signature of one flat. The Violins II staff (vII) is in treble clef with a key signature of one flat. The Viola (vIa) and Violoncello (vIc) staves are in alto and bass clefs respectively, both with a key signature of one flat. The music features eighth and sixteenth notes with various articulations and slurs.

Handwritten musical score for Flute (Fl.), Oboe (ob.), Clarinet in B-flat (cl. in Bb), and Bassoon (Fg.). The score consists of four staves. The Flute staff is in treble clef. The Oboe staff is in treble clef with a key signature of one flat. The Clarinet in B-flat staff is in treble clef with a key signature of one flat. The Bassoon staff is in bass clef with a key signature of one flat. The score includes dynamic markings such as *mp*, *cresc.*, *mf*, *dim*, and *p*. There are also performance instructions like *a2* and *tr*.

Handwritten musical score for Violins I and II, Viola, Violoncello, and Contrabass. The score consists of five staves. The Violins I (vI I) and Violins II (vII) staves are in treble clef with a key signature of one flat. The Viola (vIa) staff is in alto clef with a key signature of one flat. The Violoncello (vIc) and Contrabass (cb) staves are in bass clef with a key signature of one flat. The music is mostly rests, with some notes appearing in the later measures. A dynamic marking of *mp* is present.

mp
P. 33.

Partial view of handwritten musical score on the right page, showing staves for Flute (Fl.), Violins I and II (vI I, vII), Viola (vIa), Violoncello (vIc), and Contrabass (cb).

Partial view of handwritten musical score on the right page, showing staves for Oboe (ob.), Clarinet (cl.), Timpani (Timp.), Violins I and II (vI I, vII), Viola (vIa), Violoncello (vIc), and Contrabass (cb). A circular stamp is visible on the right page.

No. 31

50

Fl. *p*

VI I *p*

VI II *p*

vla *p*

vcl *p* *espr.* *mp cresc.*

cb *p*

60 1.

ob *mf*

cl *mf*

Timp. *mf*

VI I *mf*

VI II *mf*

No. 3 *mf*

vcl *f* *mf cresc.*

cb

Handwritten musical score for multiple instruments. The score is organized into systems, each with a staff label on the left. The instruments included are:

- ob. (Oboe)
- cl. (Clarinet)
- Tr. (Trumpet)
- Trb. I, II, III (Trumpets)
- Timp. (Timpani)
- vI I, vI II (Violins)
- vla (Viola)
- vlc (Violoncello)
- cb (Contrabass)

Key markings and annotations include:

- poco rit.* (poco ritardando)
- riten.* (ritardando)
- Più mosso* (faster tempo)
- mf* (mezzo-forte)
- f* (forte)
- mp* (mezzo-piano)
- pp* (pianissimo)
- ff* (fortissimo)
- legato* (smoothly)
- arco* (arco)
- a2* (second ending)
- Rehearsal mark **[70]**

The score shows complex rhythmic patterns, including dotted rhythms and sixteenth notes, with various dynamic markings and articulation marks throughout.

Partial view of the adjacent page of the musical score, showing the right-hand side of the instrument staves. Visible labels include:

- Tr.
- Trb.
- Timp.
- vlc
- cb
- Tr.
- Trb.
- Timp.
- vI I
- vI II
- vla
- vlc
- cb

Additional markings on the right page include *mp*, *arco*, and a circular stamp with the text "No. 1".

Handwritten musical score for the first system, measures 80-83. The score includes parts for Tr. (Trumpet), Trb. (Trombone), Timp. (Timpani), Vlc. (Violin), and Cb. (Cello). Measure 80 is marked with a box containing the number 80. Dynamics include p, mf, and f. A first ending bracket labeled 'a 3' spans measures 82 and 83, with '1. 2.' and '3.' indicating repeat signs.

Handwritten musical score for the second system, measures 84-87. The score includes parts for Tr. (Trumpet), Trb. (Trombone), Timp. (Timpani), V.I. (Violin I), V.II (Violin II), Vlc. (Violin), and Cb. (Cello). Measure 84 is marked with a box containing the number 84. Dynamics include p, mf, and f. A first ending bracket labeled 'a 2' spans measures 86 and 87, with '1.' and '2.' indicating repeat signs. The word 'divisi' is written above the V.I., V.II, and Vlc. staves. A rehearsal mark '90' is present above the Timp. staff in measure 86.

Tr. *a3* 108

Trb. I, II, III

Timp.

Vlc.

Cb.

Tr.

Trb. I, II, III

Timp.

Vl I

Vl II

Vla

Vlc

Cb.

divisi *tutti* 110

f *pizz.* *arco*

Cl

Fg

Tr

Trb. I, II, III

Timp.

Vl I

Vl II

Vla

Vlc

Cb.

No. 1

Handwritten musical notation for Clarinet (Cl) and Bassoon (Fg). The Cl part starts with a dynamic of *f* and includes a *2* marking above the staff. The Fg part also starts with *f* and includes a *2* marking above the staff. A boxed measure number **120** is present at the end of the system.

Handwritten musical notation for Trumpet (Tr) and Trombone (Trb) parts. The Tr part includes markings for first and second endings (1.2.) and a dynamic of *p*. The Trb part includes a dynamic of *pp*. A boxed measure number **120** is present at the end of the system.

Handwritten musical notation for Timpani (Timp). The part features a rhythmic pattern of eighth and sixteenth notes. A boxed measure number **120** is present at the end of the system.

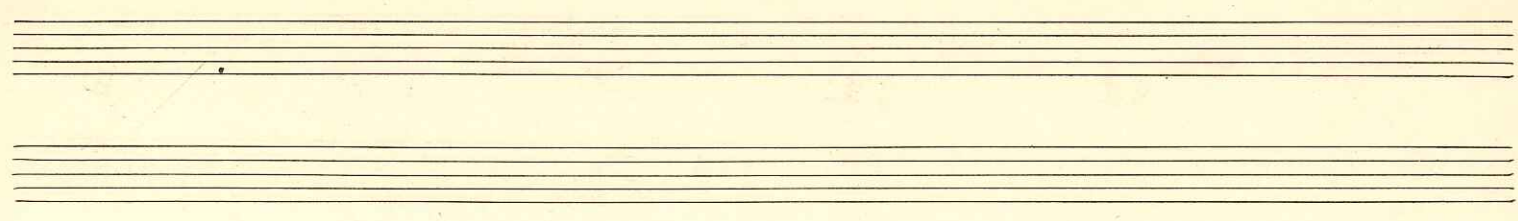
Handwritten musical notation for Violin I (vI). The part includes dynamics of *pp*, *p*, and *bf*. A boxed measure number **120** is present at the end of the system.

Handwritten musical notation for Violin II (vII). The part includes dynamics of *pp*, *p*, and *bf*.

Handwritten musical notation for Viola (v). The part includes dynamics of *pp*, *p*, and *bf*.

Handwritten musical notation for Violoncello (vcl). The part includes dynamics of *pp*, *p*, and *bf*.

Handwritten musical notation for Contrabass (cb). The part includes dynamics of *pp*, *p*, and *bf*.



Handwritten musical score for Clarinet (Cl.) and Bassoon (Fg.).

Cl. part: *p* - *ff* dynamic markings. *d=d.* above the staff.

Fg. part: *p* - *ff* dynamic markings. *d=d.* above the staff.

Time signature: 6/4.

Handwritten musical score for Trumpet (Tr.) and Trombone (Tnb.).

Tr. part: *ff* dynamic marking. *d=d.* above the staff.

Tnb. I part: *ff* dynamic marking. *d=d.* above the staff.

Tnb. II part: *ff* dynamic marking. *d=d.* above the staff.

Time signature: 6/4.

Handwritten musical score for Timpani (Timp.).

ff dynamic marking. *d=d.* above the staff.

Time signature: 6/4.

Handwritten musical score for Violins (vI, vII), Viola (v/a), Violoncello (v/c), and Contrabass (cb).

vI part: *ff* dynamic marking. *d=d.* above the staff. Includes *mp.* marking and complex notation.

vII part: *ff* dynamic marking. *d=d.* above the staff.

v/a part: *ff* dynamic marking. *d=d.* above the staff.

v/c part: *ff* dynamic marking. *d=d.* above the staff.

cb part: *ff* dynamic marking. *d=d.* above the staff.

Time signature: 6/4.

Partial view of handwritten musical score on the adjacent page.

Cl. part: *p* dynamic marking.

Fg. part: *p* dynamic marking.

vI part: *p* dynamic marking.

vII part: *p* dynamic marking.

v/a part: *p* dynamic marking.

v/c part: *p* dynamic marking.

cb part: *p* dynamic marking.

Time signature: 6/4.

Vertical text on the right edge: No. 1

130

Cl. *p* # *p#*

Fg. *p* # *p#*

130

vI *cresc.*

vII *cresc.*

vIIa *mf* *cresc.*

Cl. *p*

Fg. *p*

vI *p*

vII *p*

vIIa *p* *f*

vlc *f*

Handwritten musical score for measures 140-143. The score includes staves for Clarinet (cl.), Bassoon (Fg), Trombone (Tub), Violin I (vI), Violin II (vII), Viola (vIa), Violoncello (vIc), and Contrabass (cb). Measure 140 is marked with a box containing the number 140. The Trombone part in measure 140 is marked with *mp legato* and *a3*. The Violin I and II parts are marked with *mf*. The Viola and Violoncello parts also feature *mf* markings. The score shows various musical notations including notes, rests, and dynamic markings.

Handwritten musical score for measures 140-143 on the right page. The score includes staves for Trumpet (Tr.), Trombone (Tub), Violin I (vI), Violin II (vII), Viola (vIa), Violoncello (vIc), and Contrabass (cb). Measure 140 is marked with a box containing the number 140. The Trumpet part in measure 140 is marked with *a2*. The Trombone part in measure 140 is marked with *bd.* and *pp*. The Violin I and II parts are marked with *bd.* and *pp*. The Viola part in measure 140 is marked with *118.* and *pp*. The Violoncello part in measure 140 is marked with *pp*. The Contrabass part in measure 140 is marked with *pp*. The score shows various musical notations including notes, rests, and dynamic markings.

Handwritten text: No. 1

Handwritten musical score for the first system, measures 145-150. The score includes parts for Trumpet (Tr.), Trombone (Trb.), Violin I (vI I), Violin II (vI II), Viola (vIa), Violoncello (vIc), and Contrabass (cb). The music is marked with dynamics such as *mf*, *p*, *f*, and *arco*. A first ending bracket labeled "1. legato" spans measures 145-149, and a second ending bracket labeled "2." spans measures 149-150. The key signature has one flat, and the time signature is 4/4. The notation includes various note values, rests, and articulation marks.

Handwritten musical score for the second system, measures 151-156. The score includes parts for Trumpet (Tr.), Trombone (Trb.), Violin I (vI I), Violin II (vI II), Viola (vIa), Violoncello (vIc), and Contrabass (cb). The music is marked with dynamics such as *p*, *f*, and *arco*. A first ending bracket labeled "1." spans measures 151-155, and a second ending bracket labeled "2. 3." spans measures 155-156. The key signature has one flat, and the time signature is 4/4. The notation includes various note values, rests, and articulation marks.

505
No. 51

Empty musical staves for various instruments, including strings (vI, vII, vIa, vIc, cb) and woodwinds (cl, Tr, Trib).

cl a2

Tr 160

Trib 160

vII 160

vII 160

vIa 160

vIc 160

cb 160

vI I f

vI II p

vI a p

vI c p

cb p

Fl. p

Fg. p

vI I p

vI II p

vI a p

vI c p

cb p

NO. 1

Handwritten musical score for Violin I (Vl I), Violin II (Vl II), Viola (Vla), Violoncello (Vlc), and Contrabasso (Cb). The score includes dynamic markings such as *f*, *mf*, *cresc.*, *mp*, and *Pizz. mp*. The notation features various accidentals and phrasing slurs.

Handwritten musical score for Flute (Fl.) and Flute II (Flg.). The Flute part includes a measure marked **170** and dynamic markings like *mp*. The Flute II part has a measure marked *az* and *mp*.

Handwritten musical score for Violin I (Vl I), Violin II (Vl II), Clarinet (Cl), and Contrabasso (Cb). The Violin parts include a measure marked **170** and dynamic markings like *mf* and *mp*. The Clarinet and Contrabasso parts also feature dynamic markings like *mp*.

180

Pic. *mf cresc.*

Fl. *mf cresc.*

Ob. *mf cresc.*

Cl. *mf cresc.*

Fg. *mf cresc.*

Tr. *mf cresc.*

Tnb. *mf cresc.*

Handwritten musical notation for woodwinds and brass, including dynamics like *mf cresc.* and *ff*, and performance markings like *a2*, *tr*, and *3. mf cresc.*

Cymb. *ff*

Temp. *ff ta*

Handwritten musical notation for percussion, including dynamics like *ff* and *ff ta*.

Vl I *mf cresc.*

Vl II *mf cresc.*

Vla *cresc.*

Vlc *mf cresc.*

Cb *mf arco cresc.*

Handwritten musical notation for strings, including dynamics like *mf cresc.*, *cresc.*, and *mf arco cresc.*, and performance markings like *ff*.

MMS No. C 1

d. = d

Handwritten musical score for the first system, featuring five staves. The notation includes various notes, rests, and dynamic markings such as *p.* and *f*. The time signature is $\frac{2}{2}$. The first staff has a treble clef and a *p.* marking. The second staff has a bass clef and a *f* marking. The third staff has a treble clef and a *f* marking. The fourth staff has a bass clef and a *f* marking. The fifth staff has a bass clef and a *f* marking.

d. = d

Handwritten musical score for the second system, consisting of two empty staves. The top staff has a treble clef and a $\frac{2}{2}$ time signature. The bottom staff has a bass clef and a $\frac{2}{4}$ time signature.

d. = d

Handwritten musical score for the third system, featuring two staves. The top staff has a treble clef and a $\frac{2}{2}$ time signature. The bottom staff has a bass clef and a $\frac{2}{2}$ time signature. The notation includes notes and rests, with a *mf* marking in the bottom staff.

d. = d

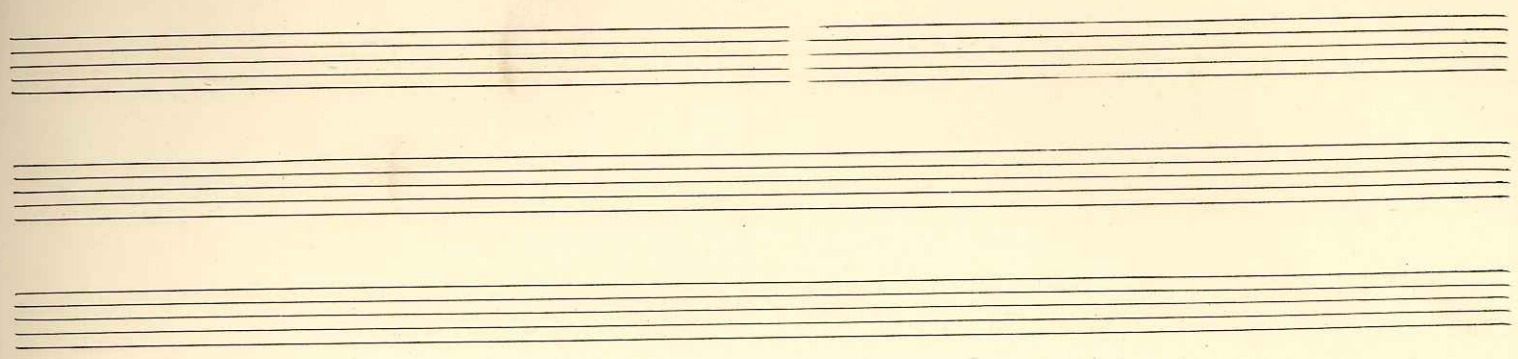
Handwritten musical score for the fourth system, featuring six staves. The notation includes complex notation, including triplets and dynamic markings such as *p* and *f*. The time signature is $\frac{2}{2}$. The first staff has a treble clef and a *p* marking. The second staff has a treble clef and a *p* marking. The third staff has a treble clef and a *p* marking. The fourth staff has a treble clef and a *p* marking. The fifth staff has a treble clef and a *p* marking. The sixth staff has a bass clef and a *p* marking.

MS No C 1

Handwritten musical score for a woodwind and percussion ensemble. The score is arranged in a system with the following parts from top to bottom:

- Pic.** (Piccolo): Treble clef, 2/4 time signature. Starts with a melodic line in the first measure, followed by rests, and then a second melodic line in the third measure.
- Fl.** (Flute): Treble clef. Remains silent throughout the measures shown.
- ob.** (Oboe): Treble clef. Enters in the second measure with a melodic line, marked *mf*.
- cl.** (Clarinet): Treble clef. Enters in the third measure with a melodic line, marked *mf* and *al*.
- Fg.** (Bassoon): Bass clef. Plays a melodic line throughout the measures.
- Timp.** (Timpani): Bass clef. Plays a rhythmic pattern of eighth notes, marked *mp*. Above the staff, the instruction *poco a poco dim.* is written.
- vln I** (Violin I): Treble clef. Shows two chords in the first two measures, then rests.
- vln II** (Violin II): Treble clef. Shows two chords in the first two measures, then rests.
- vla** (Viola): Bass clef. Shows two chords in the first two measures, then rests.
- vcl** (Violoncello): Bass clef. Shows two chords in the first two measures, then rests.
- cb** (Cello): Bass clef. Shows two chords in the first two measures, then rests.

The score includes various musical notations such as slurs, accents, and dynamic markings (*mf*, *mp*, *al*). The woodwind parts feature complex rhythmic patterns and melodic lines.



[190]

Handwritten musical notation for measures 189 and 190. Measure 189 features a melodic line with dynamics *mp*, *p*, and *pp*. Measure 190 consists of whole rests for all staves.

[190]

Handwritten musical notation for measure 190, showing a melodic line with dynamics *p*, *pp*, and *ppp*.

[190]

Handwritten musical notation for measure 190, showing piano accompaniment with chords and dynamics *ppp*.

Attacca

MS No. C 1